



## Bluetooth Magnetic Credit Card Reader and Transaction Receipt Printer

### SETUP FOR Windows Mobile 5 & 6

Just follow these easy steps setting up your Merchant on the Move Printer to the 6700 Pocket PC. Then configure Merchant on the GO to work with your Merchant on the Move. Retire the wire!



#### STEP 1: Reset your Merchant on the Move.

Before you can pair the Merchant on the Move with your PDA, the Merchant on the Move should first be reset. To do this...

1. Turn off the Merchant on the Move (if it is already on).
2. Press and **Hold** the ON button for at least 3 seconds.
3. When the paper starts advancing, release the ON button.  
A diagnostic sheet will be printed.
4. After the print out completes, the printer' bluetooth memory is cleared and ready for pairing to your PDA.

**NOTICE:** If you are REINSTALLING a Merchant on the Move, this will erase the existing pairing. You **MUST** delete the connection in your PDA before performing the next step.



Tap START >> SETTINGS

Select the "Connections" tab on the bottom,

Then tap on the Bluetooth icon.



In the "Mode" Tab, check both boxes



Tap on "Devices" on the bottom of the screen,

**Then tap on "New Partnership..."**

Make sure your Spectrum is ON



The 6700 will search for the Spectrum



When found, the Spectrum will show up as "MPSxxxxxxx" The numbers will vary.

Tap on the "MPS" Selection for the Spectrum,  
Then tap "Next"



Enter the Passcode

1000

Then tap "Next"

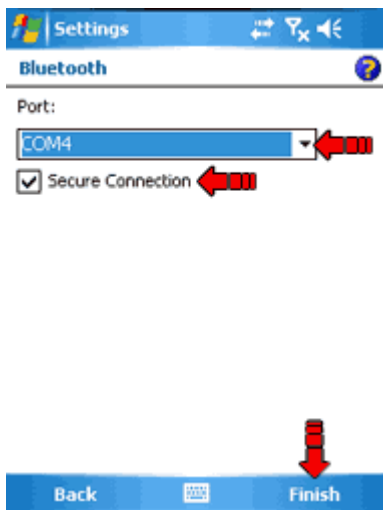


Select "Serial Port", then tap "FINISH"



Now, we need to assign a port for it to talk to, tap on the "Com Ports" tab on the bottom.

Then tap on "New Outgoing Port"



Select a COM port OTHER than "0" (usually 4 or 7) check "Secure Connection", and tap "OK"

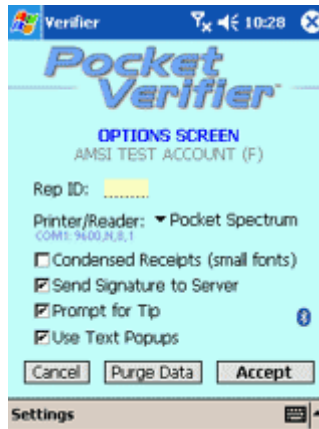
**NOTE: AT THIS POINT TURN THE CARD READER OFF, WAIT A MINUTE, THEN TURN IT BACK ON.**

## Setup Merchant on the GO for Outgoing Com Port.

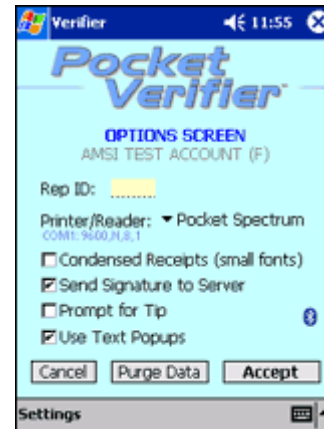
1. Open *Merchant on the GO*.
2. Log into your account.
3. Go to the *Options* screen.
4. Change *Printer/Reader* to *Merchant on the Move*.
5. Tap *Settings*, then *Port Settings*.
6. Change *Port Settings* to 38400,N,8,1
7. Tap *Ok*.
8. Tap *Settings*, then *Com Port*.
9. Change *Port Number* to the *Outbound COM Port* determined above (i.e., 4.).
10. Tap *Ok*.
11. Tap *Accept*.



4



5,6,7



8,9

The 6700 is now setup to work with the Merchant on the GO software and Merchant on the Move!

**If you are on the sales screen when the Merchant on the Move is off and you would like to read a card, turn on the printer, wait for the single beep and linefeed, then click on the blue Bluetooth icon at the top right of the screen. The icon will turn red briefly until communications are established.**

